

Sphinx, Egypt: Assembly Instructions

Canon ® is a registered trademark of Canon Inc. © Canon Inc. © T.Ichiyama



PAPER CRAFT

<http://www.canon.com/c-park/en/>



View of completed model

Sphinx, Egypt

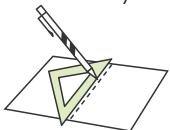
The word sphinx in Greek means "strangler." More commonly, it refers to a creature in Greek mythology with the body of a lion, the head of a woman, and the wings of an eagle. The stone Sphinx in Giza, Egypt, was built to protect the graves in the pyramids. The name Sphinx was assigned by the Greeks, drawing on their own mythological traditions. The original name of the Sphinx remains unknown.

*This model was designed for Papercraft and may differ from the original in some respects.

■ **Parts list(pattern):** Three US letter sheets (No.3 to No.5)

■ **No. of Parts:** 16

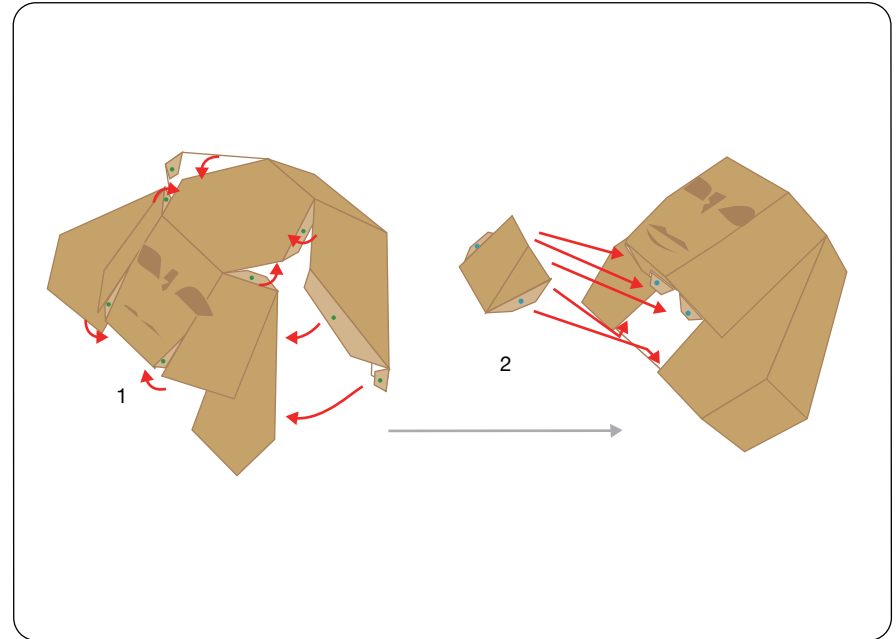
*Build the model by carefully reading the Assembly Instructions, in the parts sheet page order.



*Hint: Trace along the folds with a ruler and an exhausted pen (no ink) to get a sharper, easier fold.

Before starting assembly: Writing the number of each section on its back side before cutting out the sections is highly recommended.
(* This way, you can be sure which section is which even after cutting out the sections.)

→ Indicates where sections should be glued together.



Assembly Instructions



Mountain fold(dotted line)

Make a mountain fold.

Valley fold(dashed and dotted line)

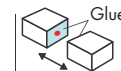
Make a valley fold.

Scissors line(solid line)

Cut along the line.

Cut in line(solid line)

Cut along the line.



Glue spot(Red dot)

Glue parts with the same number together.

Glue spot(Green dot)

Glue within the same part.

Glue spot(Blue dot)

Glue to the rear of the other part.

Tools and materials



Scissors, set square, glue(We recommend stick glue), pencil, used ballpoint pen, toothpicks, tweezers, (useful for handling small parts)

Assembly tip



Before gluing, crease the paper along mountain fold and valley fold lines and make sure rounded sections are nice and stiff.

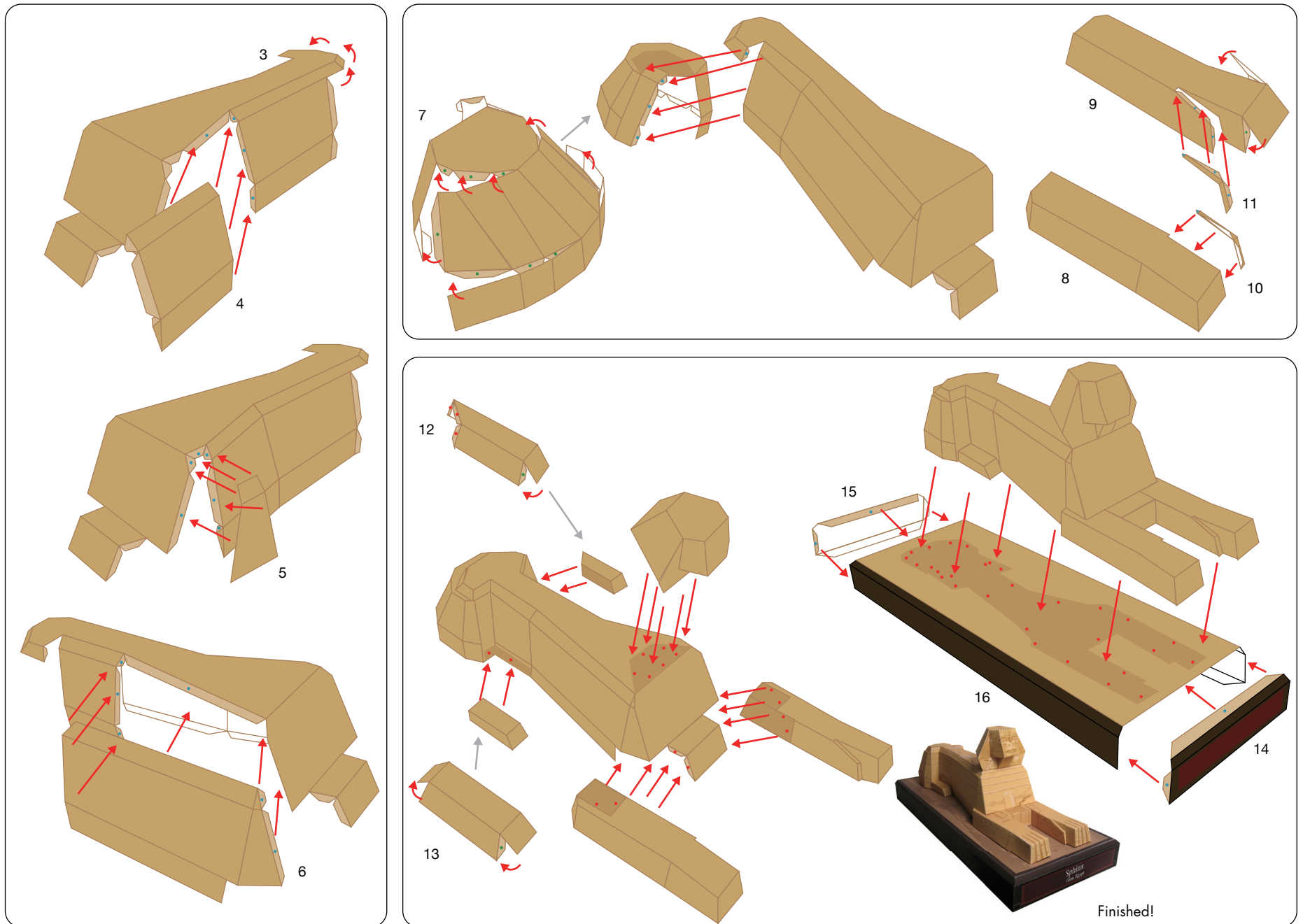
Caution



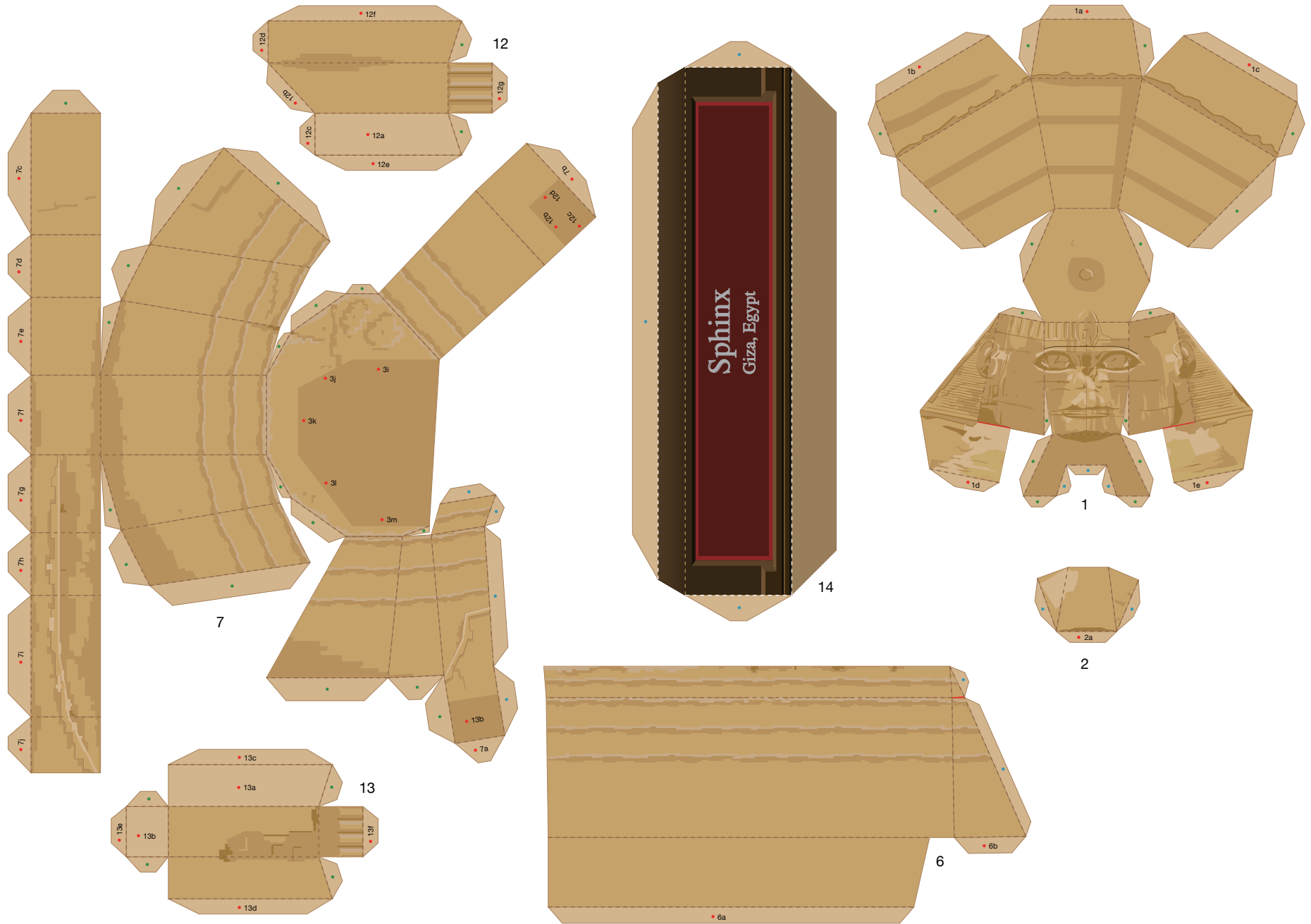
Glue, scissors and other tools may be dangerous to young children so be sure to keep them out of the reach of young children.

Sphinx, Egypt: Assembly Instructions

Canon ® is a registered trademark of Canon Inc. © Canon Inc. © T.Ichiyama

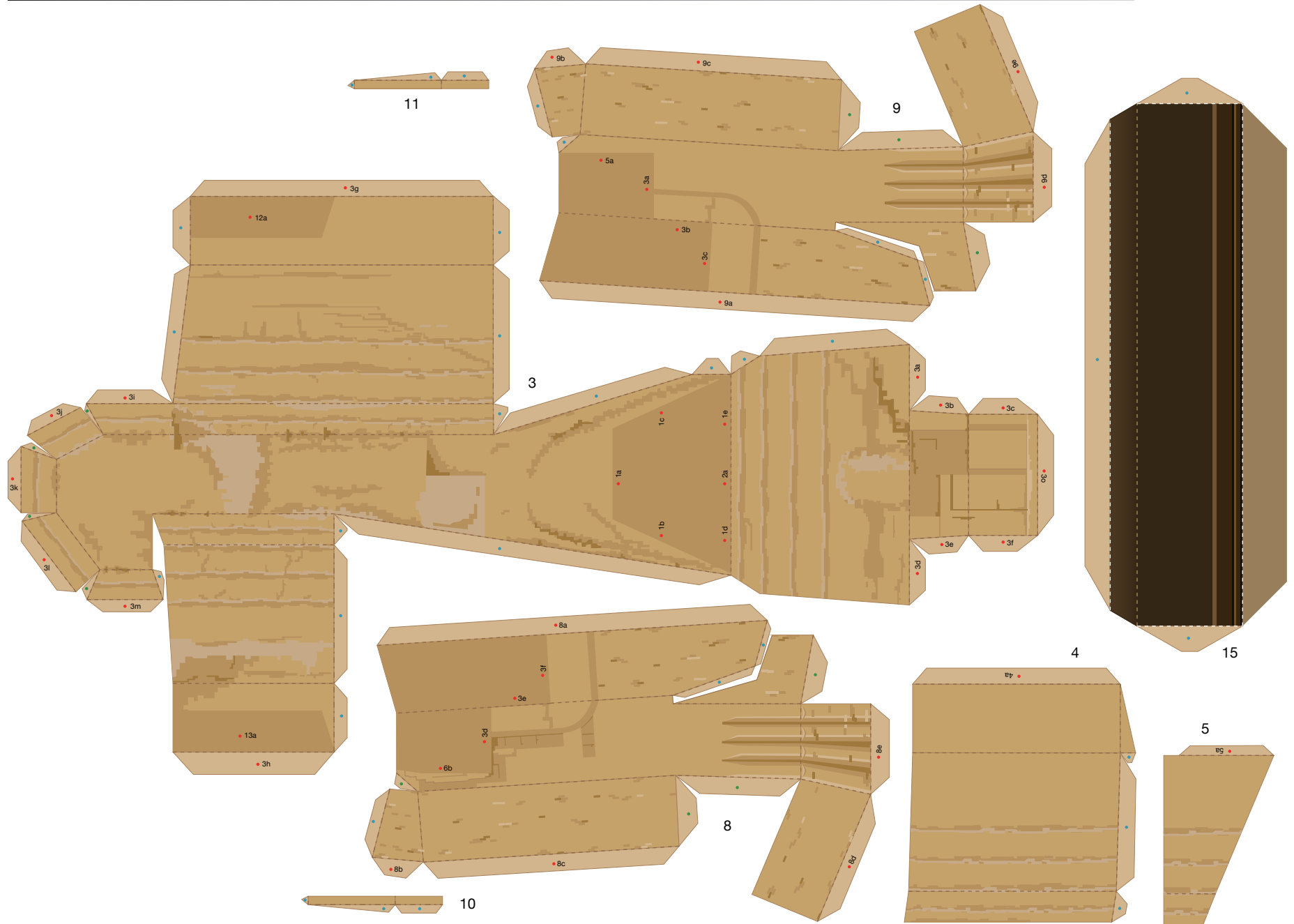


Sphinx, Egypt: Pattern



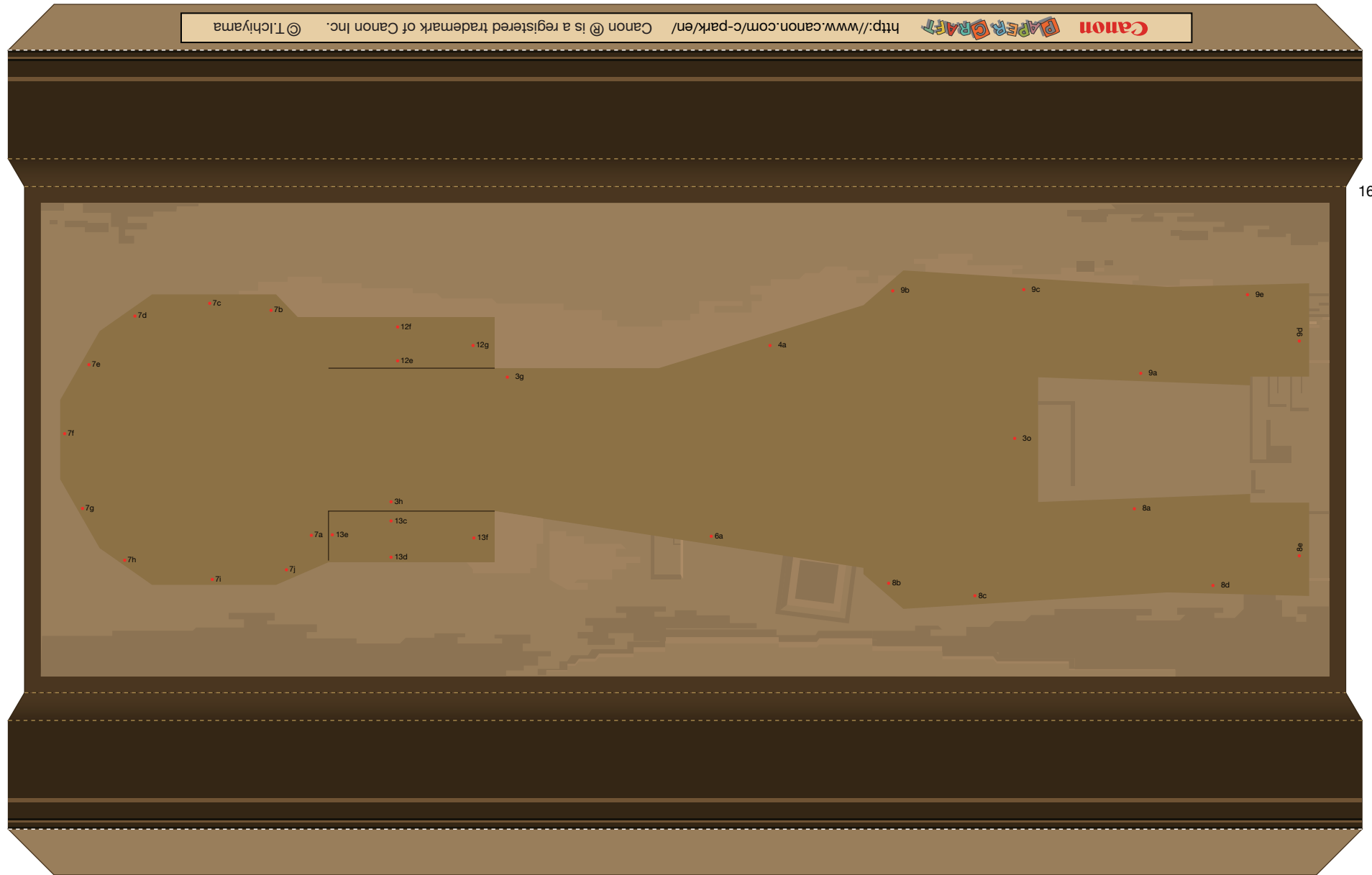
Sphinx, Egypt: Pattern

Canon® is a registered trademark of Canon Inc. © Canon Inc. © T.Ichiyama



Sphinx, Egypt: Pattern

Canon® is a registered trademark of Canon Inc. © Canon Inc. © T.Ichiyama



16